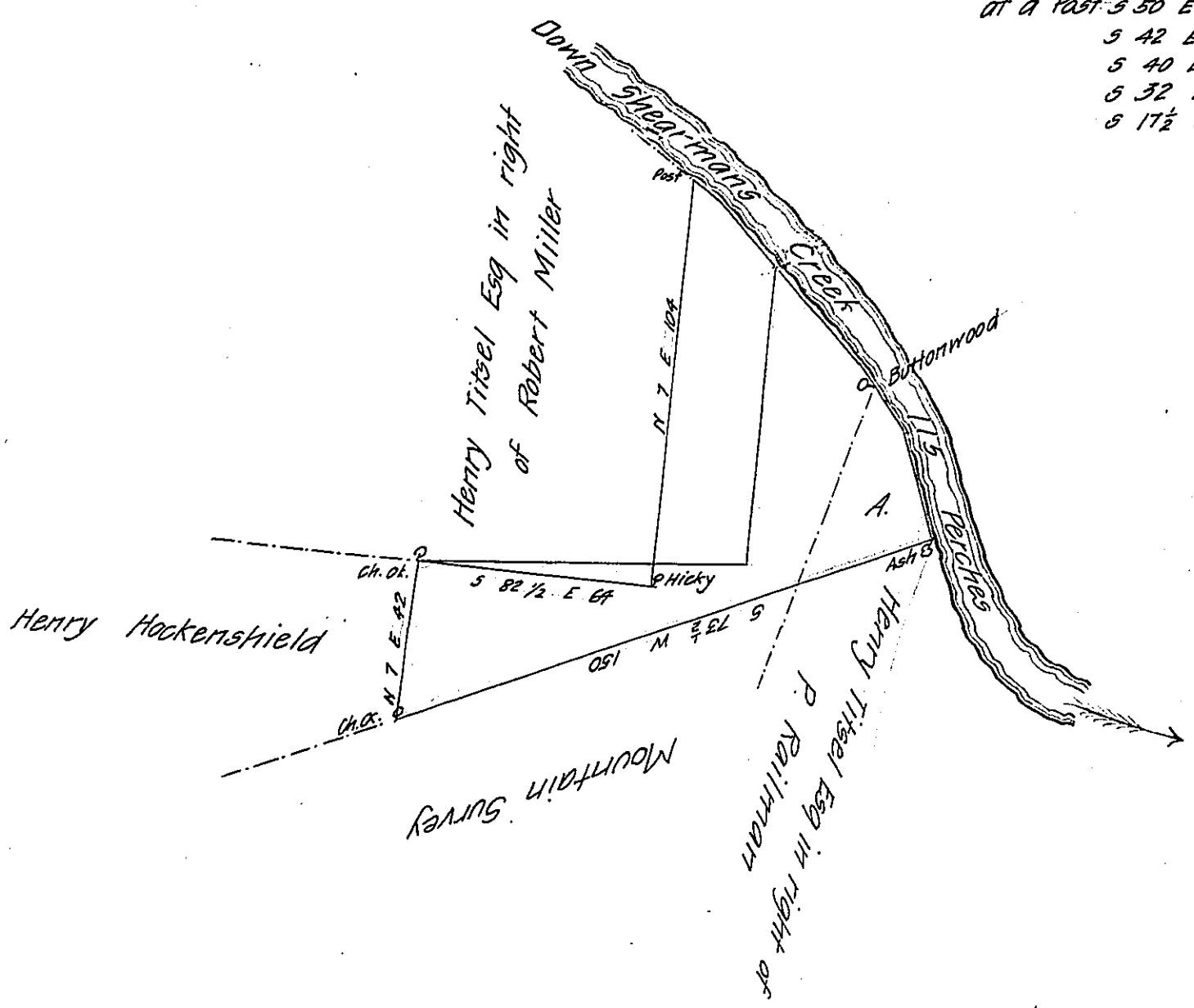


Courses & distances down
 Shearmans Creek Beginning
 at a Post S 50 E 8
 S 42 E 17
 S 40 E 40
 S 32 E 20
 S 17½ E 30 to an Ash.



Draught of Land Situate in Tyrone Township Perry County Containing
 thirty Nine acres one hundred and thirty six perches & allowance of six per
 cent for roads &c. Surveyed March the 17th 1828 in pursuance of an Order
 granted Thomas Hamilton for 30^{as} dated February the 13th 1767 No 2774
 Jacob Spangler Esq^r Pr

Surveyor General of Pa. Wm Wilson D.S.

Note The yellow lines represent a survey made the — day of — in pursuance
 of a warrant granted to Jacob Stambaugh in trust for the heirs of Daniel
 Fusselman dec^d dated the 21st day of April A.D. 1817. The part marked A
 Interferes with a survey made in pursuance of a Warrant granted Peter
 Rigilman dated January (or Febr'y) 3^d 1814 now owned by Henry Tisel Esq

J.S. W. W.

IN TESTIMONY that the above is a copy of the original remaining on file in
 the Department of Internal Affairs of Pennsylvania, made
 conformably to an Act of Assembly approved the 16th day of
 February, 1833, I have hereunto set my Hand and caused
 the Seal of said Department to be affixed at Harrisburg,
 this eleventh day of September 1908

Henry Howard
 Secretary of Internal Affairs.